

Kenilworth Update

January 2013



WELCOME! to the first edition of **Kenilworth Update** in 2013. We have taken sometime to rearrange the way we set things out so you can find things easier as you read your monthly digest of what is taking place in the town in relation to crime prevention, police performance

We have created five sections for **Kenilworth Update** so you can find the information/advice easily. These will appear each month and in each section we will provide the most up to date information we can to help you.



The Sections that will appear in Kenilworth Update

Safer Neighbourhood Team Update



Crime Update



Advice Update



General Update



Live Update



Safer Neighbourhood Team (SNT) Update

This section will provide information on the objectives you want the police to be concentrating on within the Kenilworth area. These objectives are discussed, agreed and set at the Kenilworth Community Forum, which is a public meeting all residents are encouraged to attend. The section will also provide news and updates on other activities that Kenilworth SNT are involved in together with elements on police performance.

Crime Update

This section will provide the latest news related to crime affecting Kenilworth, what it might mean to you and what you can do to lower the risk of being a victim of crime

General Update

Information about things that are considered to be useful or important for residents to be aware of.

Advice Update

Each month we will concentrate in more detail on specific issues and give advice to residents as to how they can protect themselves and their property.

Live Update

Information about how you can contact your Safer Neighbourhood Team (SNT) and the options you have to keep up to date with what is going on in and around Kenilworth with Neighbourhood Watch and your SNT

Safer Neighbourhood Team Update

Kenilworth - January 2013



A New Year Message from PC Pete King Kenilworth's Safer Neighbourhood Team Beat Manager

Dear Reader,

It's incredible but we are already into January of a New Year, 2013, and may I wish you all the very best over the coming months. I can't help but think back to 2012 as an important year for Kenilworth not least because of the Diamond Jubilee but most of all for wonderful scenes and atmosphere that the town enjoyed on 1st July when the Olympic Torch came through.

I wanted to take this opportunity to thank all those across the town that do take the time and trouble to get involved and contribute to their town and community. This includes the work of Kenilworth Update by ensuring that the Safer Neighbourhood Team can get the most important and up to date messages across the town every month.

Kenilworth is a vibrant town with much positive to commend it to both to those that live here as well as those that visit. This year the Safer Neighbourhood Team will continue to do all it can to support the community and encourage participation by as many as possible to make and keep a Kenilworth a great and safe place to be.



Alloy Thefts

See the Crime Update section for more details.

If you are offered alloy wheels for sale inform us on 101 or Crimestoppers on 0800 555 111

Junior Neighbourhood Watch Grows!

The SNT is engaging at Clinton School, Burton Green and now St Nicholas. We are intending to cover Road Safety soon.

Warwickshire Police Performance 2012/13

As at 12th January 2013 since 1st April 2012

- Recorded Crime was down by 14.4%
- Homes burgled reduced by 19.4%
- Vehicle Crime reduced by 21.5%
- Criminal Damage reduced by 26.7%

In the first 6 months of the 2012/13-year Warwickshire Police recorded an average of 84 crimes a day compared with 126 a day in the previous year.



Crime Update

Kenilworth - January 2013



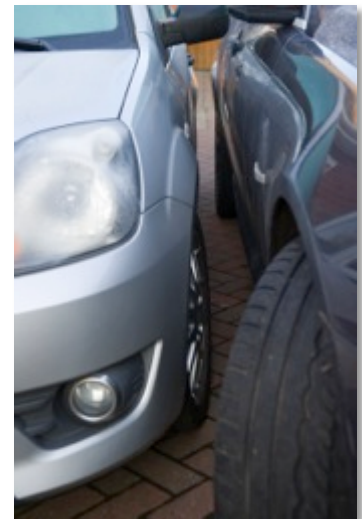
Alloy Wheel Thefts

Kenilworth's Safer Neighbourhood Team (Police) have issued a warning to owners of Ford Fiestas that have alloy wheels. The warning was issued as a result of four separate incidents in recent days on the "Knights Meadow" estate in Kenilworth. Knights Meadow is situated in the eastern area of the town and the main roads through the estate are Dencer Drive, Rawnsley Drive and Leyes Lane. Police Community Support Officer, Craig Ricardo said " We are appealing to all owners of Ford Fiesta and

Focus models fitted with alloy wheels to be aware and take sensible measures to protect their vehicles. Clearly the thieves are interested in alloy wheels for this particular model of vehicle. We want owners to be vigilant and if anyone is seen around vehicles, including private drives, that are suspicious please call it in on 999 immediately".

The vehicles that have had their alloy wheels removed and stolen have been left on bricks so the thieves work quietly and in the early hours. Here are some of the measures vehicle owners can take:

- Park the vehicle as close to your home as possible.
- Listen out keenly for any sounds nearby that might indicate suspicious or criminal activity, if so look out carefully and safely and report anything suspicious.
- **If you have a double drive park vehicles as close together as possible making access to some of the wheels difficult to impossible** (you might want to get someone to help with this by standing in front and guiding you so you don't bump the other vehicle).
- Make sure that you have at least two locking wheel nuts on each wheel – it makes it more difficult for the thieves.
- Obtain Smartwater and make sure it is put on all of your alloy wheels.



If you own a Ford Fiesta or Ford Focus we want to draw your attention to this issue.

Your vehicle could be vulnerable so follow our advice and take action now.



Crime Update

Kenilworth - January 2013



Insecure properties make things easy

A couple of recent incidents in Kenilworth have underlined how important it is to make sure all parts of your home are fully and properly secure. One home was burgled with entry gained through an insecure downstairs front window. In another event garden tools that were stored outside were used as a means to force entry into a home.

Valuables are still being left in vehicles on drives.

The problem of drivers leaving valuable items in cars is still with us in Kenilworth. It is really difficult for the police to do more about this type of crime if people continue to ignore advice about removing valuable items from vehicles when parking them at home, either on the street or even on private drives.

Members of our Safer Neighbourhood Team have, whilst visiting people in connection with other matters, have noticed vehicles with laptops and sat nav devices left in the boot or even on the seat! This is an open invitation to a thief to smash and grab. It takes them no more than 5 seconds and they are gone.



Advice Update

Kenilworth - January 2013



Put Car Keys Away – Don't leave them on show

The temptation is to put your keys down once you get inside your home somewhere you can easily pick them up when you need them next. Often this means a table or shelf near the entrance to your home. Unfortunately, it's very easy and convenient for 'fishing thieves' who can easily hook the keys up through the letterbox and be away in your cherished motor before you even know your car is no longer outside. If you own a high performance car some thieves are prepared to break in to your home to get keys so don't make it easy for them.

Check your home now – Lock yourself out audit

Most burglaries are opportunist crimes, simply the more difficult it appears and actually is for someone to enter your property the more it will deter them from trying. As we have advised before, try going outside and think you have locked yourself out of your home and have no prospect of getting the keys for hours. You might be shocked how easy it might be to get into your home as you try to think of a way of doing so.

If you find gaps or ways to get in then it means a burglar most certainly will! Now you have identified any gaps take action to close them and don't wait to get round to it because you might very well forget. Take action and take it now!



General Update

Kenilworth - January 2013



The **Kenilworth Greenway** cycleway is a really popular leisure facility for Kenilworth residents and visitors alike. It's important that everyone that uses the facility does so with respect for others.

That means cyclists need to respect walkers, especially senior citizens or children. Don't ride too fast and let people know you are approaching with a bell.

That means that walkers need to be mindful of cyclists and ensure they give them enough room to pass easily but safely. Those walkers with dogs need to ensure they clear up any dog mess on the actual footpath/cycleway and take it away for disposal.

Walkers and cyclists need to approach horse with care and horse riders need to ensure they have full control of their animal.

It boils down to everyone using **common sense**



Please note that the Waste Disposal and Recycling site at Cherry Orchard Kenilworth is now operating to **revised and reduced opening hours**.
The new opening times are shown on the sign above.



Live Update

Kenilworth - January 2013



You can keep up to date on the Internet. We have a website that is updated 24 hours a day with the latest crime alerts. You can click on the subscribe button at the website to get immediate alerts via email. There is no catch and it's free!

We are at: www.kenilworthnwatch.wordpress.com

We are now also on Twitter. Follow us to get the latest news via tweets that will link you to our website. We also retweet any messages from Kenilworth Safer Neighbourhood Team or other organisations where we think it appropriate or useful

Follow us (Kenilworth Update) on Twitter at: **@kenilworthwatch**

Follow Kenilworth SNT at: **@SNT_Kenilworth**



Abbey Fields
14 January 2013

How to contact Kenilworth Safer Neighbourhood Team (SNT)

You can call us on: **01926 684404**

You can email us at:
kenilworth.snt@warwickshire.police.uk

You can see us at **Abbey End Market** every Thursday between **10.30am and 11.30am**

Essential Services

Smell Gas
0800 111 999

No Electric
0800 056 8090

Water/Sewer
0800 783 4444

For general enquiries to the police and for non-emergency calls please dial

101

Where there is a danger to life or property or a crime is being committed please dial

999

Kenilworth Update is produced by Crown Watch, one of the longest running Neighbourhood Watch schemes in Kenilworth and Warwickshire. Crown Watch serves the northern end of Windy Arbour, eastern end of Whitemoor Road and Tulip Tree Avenue. It publishes Newsletters and Crime Alerts to its Co-ordinators who circulate these to residents.

Since mid 2011 Crown Watch has been working closely with Kenilworth's Safer Neighbourhood Team to produce **Kenilworth Update**. The purpose of this is to encourage more people to set up and run their own Neighbourhood Watch schemes but also to inform people through an increasing range of channels what is going on in and around the town in terms of keeping our town safe. All of the work is done voluntarily.

Kenilworth Update is compiled by Fraser Pithie on behalf of Crown Watch.



The 3 Current priorities for Kenilworth's Safer Neighbourhood Team agreed by the Community Forum on 3 December 2012

1. Ten Patrols to deter and check on Anti Social Behaviour at the recreational area between Ashdene Gardens, Elmdene Road and the alley between Lime Grove and Brooke Road, this is known by many as "Black Pad".
2. Ten Patrols in Burton Green, namely Red Lane, Cromwell Lane, Hodgetts Lane, and Hob Lane, in support of the force burglary initiative. Also as a response to a couple of recent burglaries thus providing reassurance.
3. Five speed/enforcement/monitoring sessions in Leyes Lane at school start and end times to prevent road traffic/pedestrian injury.